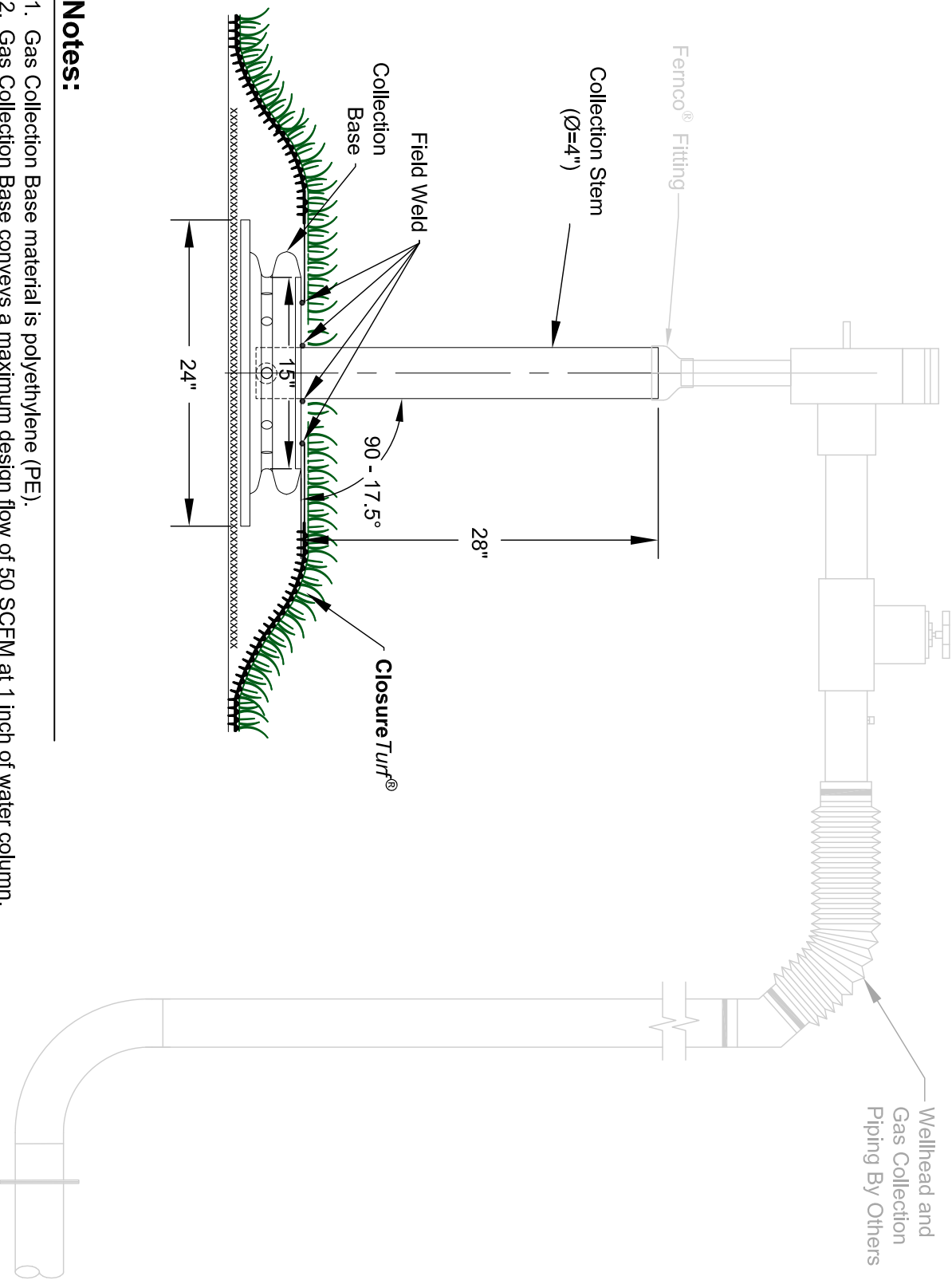




ClosureTurf®, HydroTurf®, VersaCap®, HydroBinder®, TerraArmor® and PowerCap™ are U.S. registered trademarks which designate products from Watershed Geosynthetics LLC and/or its affiliated companies (collectively, "WG") that are the subject of issued and/or pending U.S. and foreign patents and patent applications. All information provided herein by WG concerning these products are based upon data derived from independent third-party testing. This information, however, should not be used or relied upon for any specific use without first consulting with an independent professional licensed in the geographic area in which a project is located. Since the actual site conditions, and the installation and use of these products are beyond our control, no guaranty or warranty of any kind, expressed or implied, is made by WG with respect to these products.



Notes:

1. Gas Collection Base material is polyethylene (PE).
2. Gas Collection Base conveys a maximum design flow of 50 SCFM at 1 inch of water column.
3. Isolation Valves will be required at all connections where back flow of gas is possible when the gas collection system is shutdown.
4. One Pressure Relief Valve per acre is supplied with the ClosureTurf® system. Engineer of Record will determine the required number of Pressure Relief Valves.
5. Check for updates at www.watershedgeo.com.

.	FILE No.	2020-150-CT06-R5		TITLE	PRODUCT	 WatershedGeo® <i>Unearthing Solutions</i>
	REV.	5	SCALE	Surficial Gas Collection Base and Wellhead	 ClosureTurf®	
	CADD	T.S.R.	AS SHOWN			
		09-2020				